



# FORKARDT HARDINGE

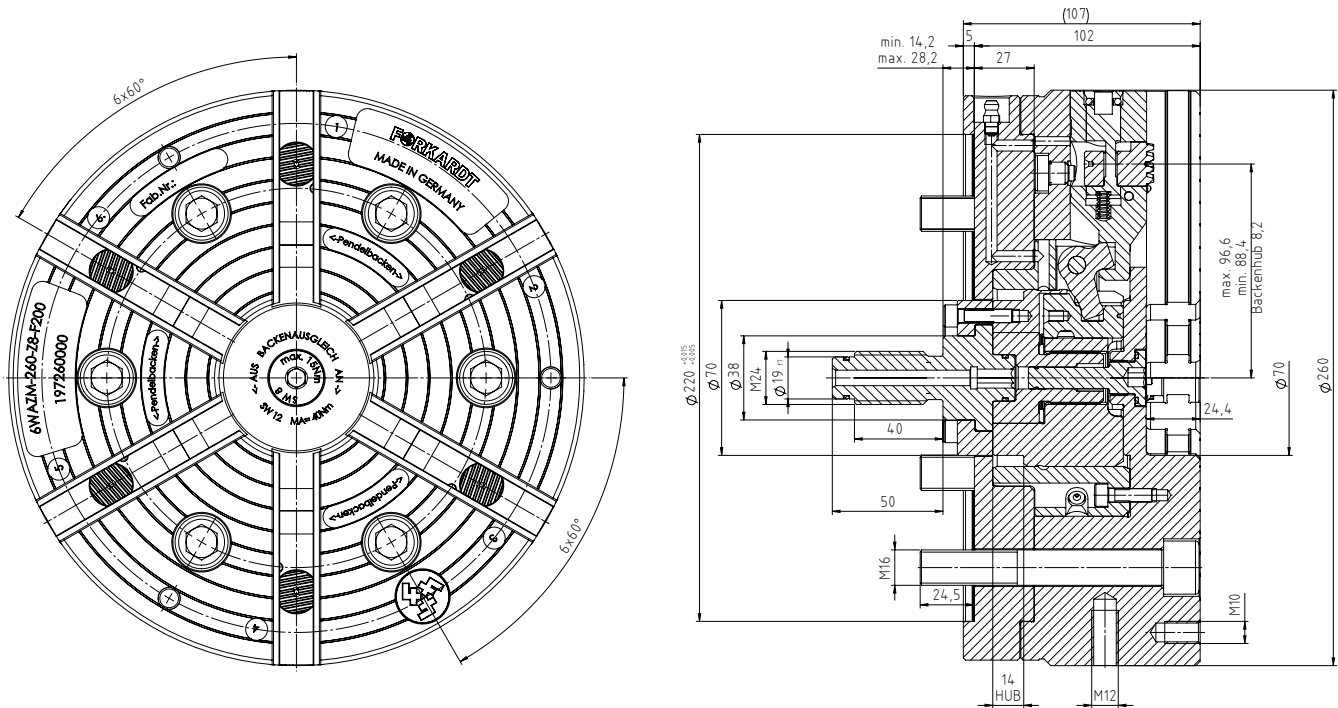


## 6 Jaw Lever Equalizing Chuck

6WAZM-260-Z8-F200  
6WAZM-400-Z11-F315  
6WAZM-630-Z15-F400

# 6 Jaw Lever Equalizing Chuck

## 6WAZM-260-Z8-F200



Performance Data		
Max. Speed	3,000	U/min
Max. Clamping force	6,400	daN
Max. Operating power	3,800	daN
Weight	38.81	kg
Jaw lift	8.2	mm
Piston stroke	14	mm
Toothing / jaw connection	F200	

# 6 Jaw Lever Equalizing Chuck

## 6WAZM-260-Z8-F200

### Spindle Mounting DIN 6350

Size	Without top jaws
Z8	D197260000

Fastening screws	6 x m16 x 110
------------------	---------------



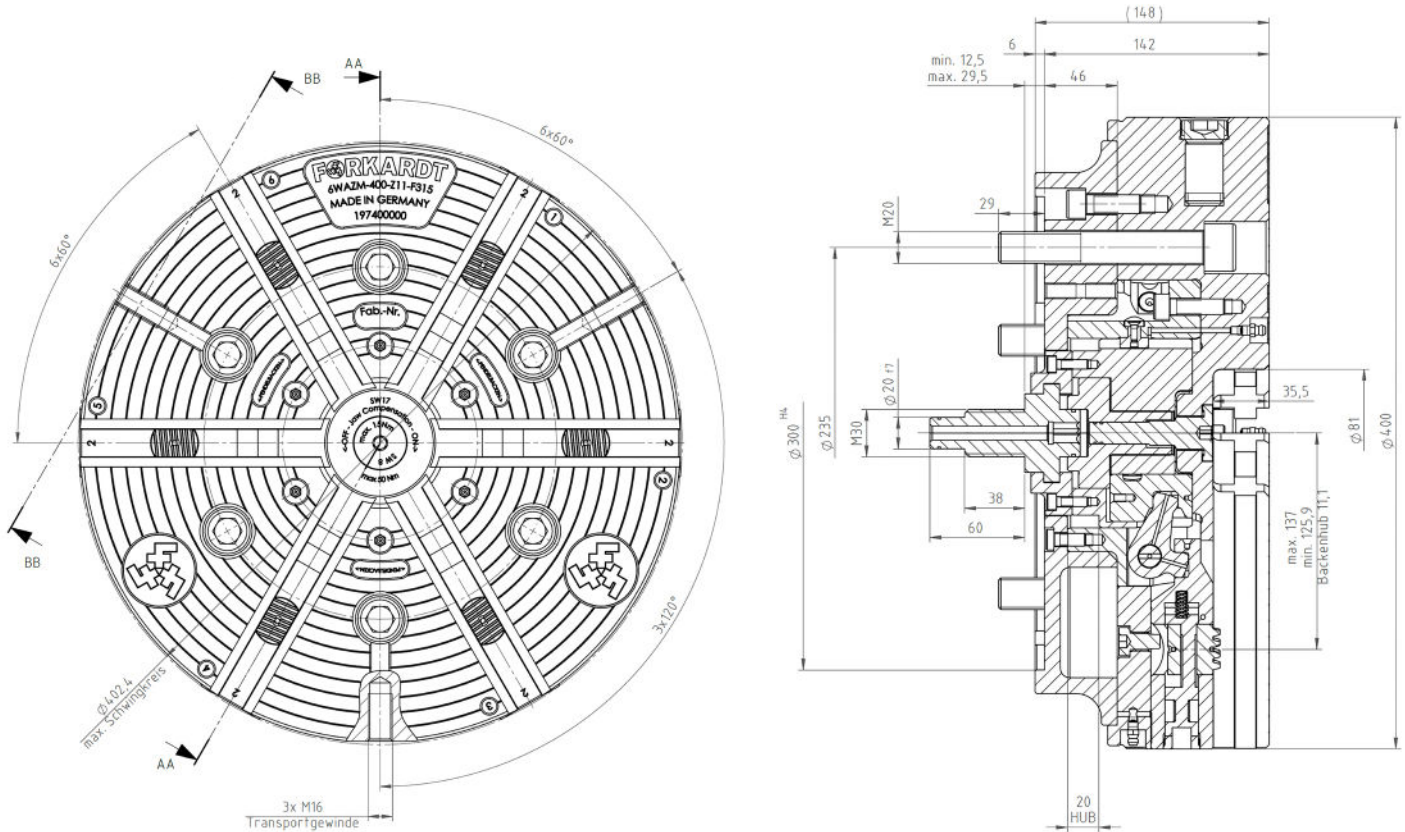
### Spindle Mounting (A2-8 or A2-11 Short Taper) DIN 55026

For mounting on a spindle to DIN 55026, you also need a flange with the required taper size.

Spindle size DIN55026	Item number
K8	Upon Request
K11	Upon Request

# 6 Jaw Lever Equalizing Chuck

## 6WAZM-400-Z11-F315



Performance Data		
Max. Speed	1400	U/min
Max. Clamping force	12,000	daN
Max. Operating power	6,500	daN
Weight	89.54	kg
Jaw lift	11.1	mm
Piston stroke	20	mm
Toothing / jaw connection	F315	

# 6 Jaw Lever Equalizing Chuck

## 6WAZM-400-Z11-F315

### Spindle Mounting DIN 6350

Size	Without top jaws
Z8	D197260000

Fastening screws	6 x m16 x 110
------------------	---------------



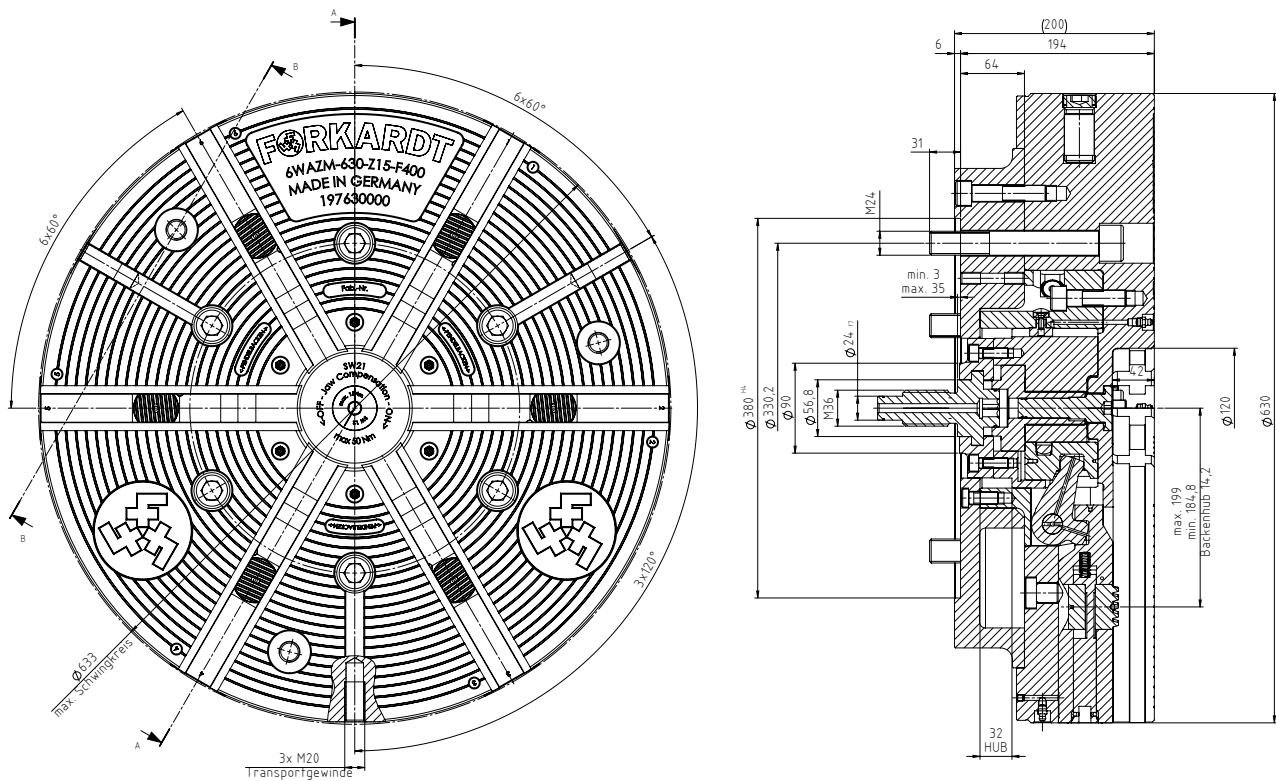
### Spindle Mounting (A2-8 or A2-11 Short Taper) DIN 55026

For mounting on a spindle to DIN 55026, you also need a flange with the required taper size.

Spindle size DIN55026	Item number
K8	Upon Request
K11	Upon Request

# 6 Jaw Lever Equalizing Chuck

## 6WAZM-630-Z15-F400



Performance Data			
Max. Speed	1,000		U/min
Max. Clamping force	16,000		daN
Max. Operating power	8,000		daN
Weight	333.25		kg
Jaw lift	14.2		mm
Piston stroke	32		mm
Toothing / jaw connection	F400		

# 6 Jaw Lever Equalizing Chuck

## 6WAZM-630-Z15-F400

### Spindle Mounting DIN 6350

Size	Without top jaws
Z15	D197630000

Fastening screws	6 x m24 x 170
------------------	---------------



### Spindle Mounting (A2-8 or A2-11 Short Taper) DIN 55026

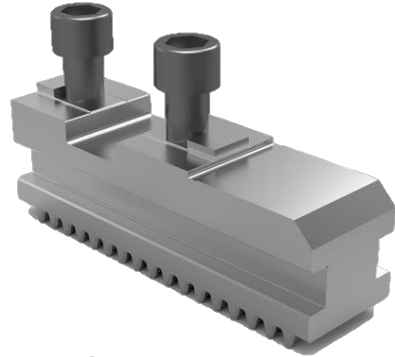
For mounting on a spindle to DIN 55026, you also need a flange with the required taper size.

Spindle size DIN55026	Item number
K11	Upon Request
K15	Upon Request

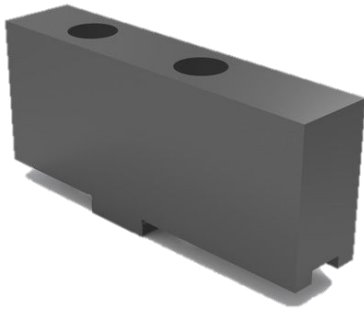
# Jaws



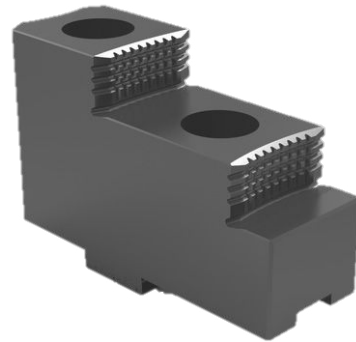
**Jaw change spanner**  
D196215010



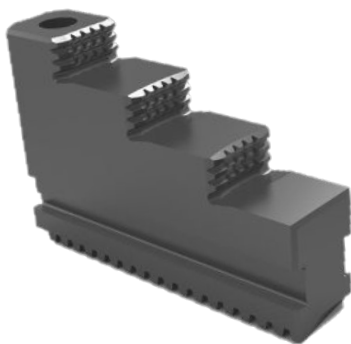
**Base jaw FGB400**  
D180577000



**Soft top jaw FWB400**  
D1070021525



**Hard top jaw FHB400**  
D1070021624

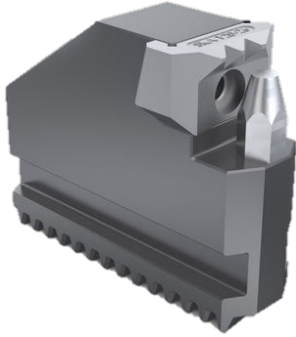


**Undivided hard stepped jaw FSTB400**  
D1070021633



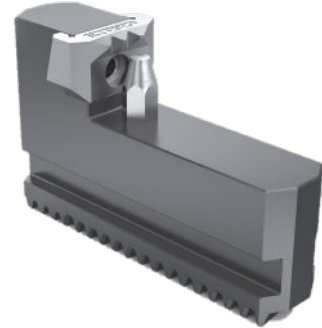
**Soft Monoblock Jaw FMB400**  
D1070021734

# Accessories



**Roughing jaw external clamping KBKTNC**

Clamping range	Item number
On request	On request



**Roughing jaw internal clamping KBKTNC**

Clamping range	Item number
On request	On request



**Grease (cartridge 400 gr) PF26**  
D410140126

**Lubricating grease (tin 1 kg) PF26**  
D410140026

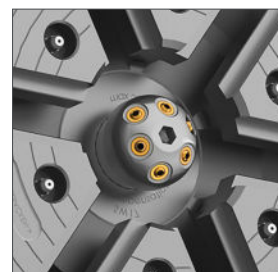


**Hydraulic hand lever press**  
D4101400121



**Clamping Forcemesser (Ø 114-744) SKM1200**  
D300224000

**Clamping plunger set  
for extending the clamping range**  
D300224003



**Spray head with 6 spray nozzles**  
D197400030

Central coolant or airblast head is available as an option



833-791-9681  
FORKARDTHARDINGE.COM  
INFO@FORKARDTHARDINGE.COM